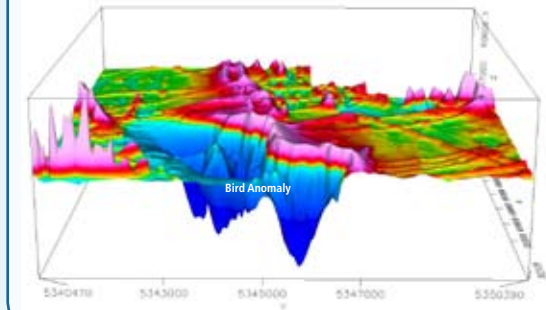


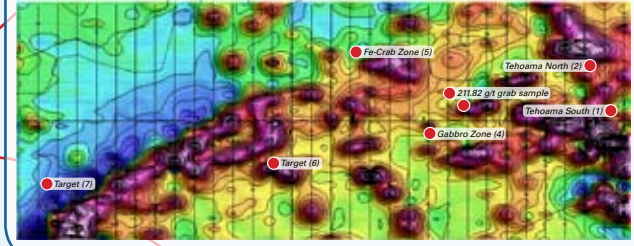
Chapleau/Wawa Area Map



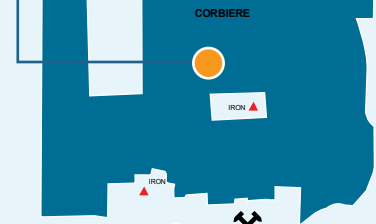
Bird Anomaly
Reverse Polarity Magnetic Target similar to magnetic response of Eagle nickel-copper precious metal deposit



Old Cabin Gold Project
Thirteen vein systems discovered. Recent grab samples as high as **211.82 g/t Au**. Veins occur along Goudreau Anticline splaying off Goudreau-Lochalsh Deformation Zone



Corbiere
35 diamonds retrieved from 8 kg sample in conglomerates including 5 macrodiamonds



Wawa

101

10 km

Fletch Kimberlite Dyke
6 diamonds recovered

Black Sulphide VMS Target - VTEM 83 area
Potential Volcanogenic Massive Sulphide deposit (copper and zinc) with gold. Target area is a large 1 x 0.5 km area with Electromagnetic (EM) anomalies. Prospecting identified anomalous copper and zinc in black sulphides. Government sampling identified anomalous gold in stream sediment samples around the large anomaly area

Katy Dyke
Kimberlite Dyke Forsteritic Olivine with Diamond inclusion Chemistry, Chrome Diopside from the Large Diamond overlap zone and plentiful G9 garnets

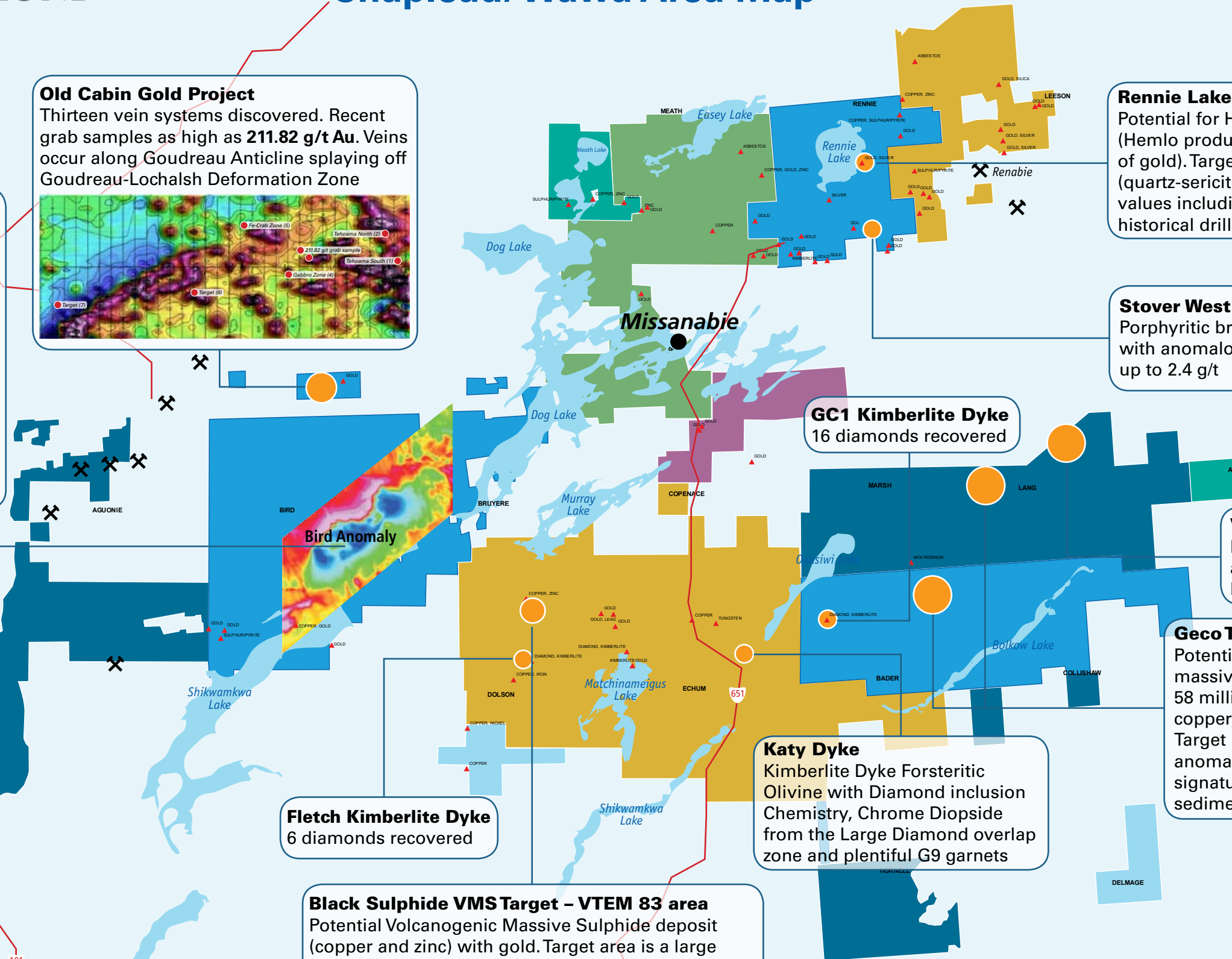
GC1 Kimberlite Dyke
16 diamonds recovered

VTEM 57
Large unexplored EM anomaly. Possible potential Base Metal target.

Geco Targets
Potential for Geco-type volcanogenic massive sulphide deposit (Geco was a 58 million tonne deposit grading 1.9% copper, 3.45% zinc, and 50 g/t silver) Target is a large electromagnetic anomaly with coincident magnetic signature in metamorphosed volcano-sedimentary belt of rocks

Rennie Lake Gold Target
Potential for Hemlo-type mineralization (Hemlo produced over 20 million ounces of gold). Targets are Hemlo-style rocks (quartz-sericite schist) with anomalous gold values including 1.32 g/t gold over 0.73 m in historical drilling

Stover West Gold Target
Porphyritic breccia in sheared mafic volcanics with anomalous gold values in quartz veins up to 2.4 g/t



- JV Partners with:**
- Amador Gold Corp.
 - Sedex Mining Corp.
 - Kalahari Resources Inc.
 - Abitibi Mining Corp.
 - Klondike Gold Corp.
 - Kootenay Gold Copenance
- Chalice Diamond Corp.**

X Past producers

■ Chalice Diamond Corp.



Chapleau